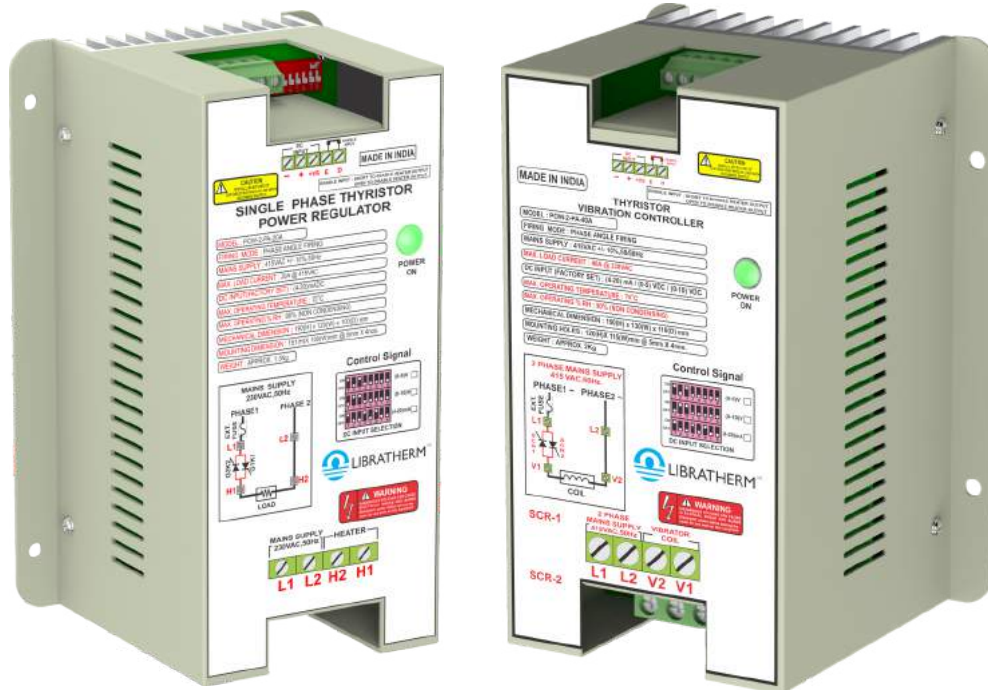
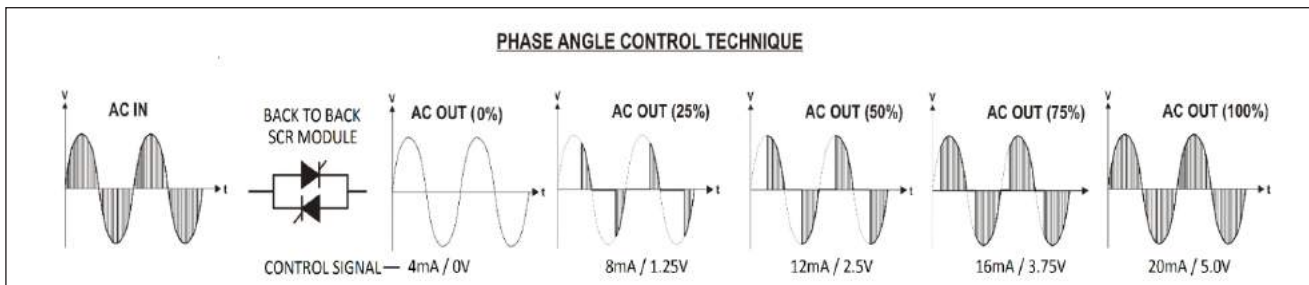


Two Phase SCR based Heater Power Regulator (ECO models)



POW-2-PA-20A

POW-2-PA-40A



MODEL WISE DESCRIPTION

Model	Product Description	Size (H x W x D) in mm.
POW-2-PA-20A	Two Phase SCR based Heater power regulator for max. 8 KW @ 415 / 440VAC load.	190 x 120 x 100
POW-2-PA-40A	Two Phase SCR based Heater power regulator for max. 16 KW @ 415 / 440VAC load.	190 x 130 x 110

FEATURES

- Solid state, field proven, rugged and reliable design.
- User selectable control signal
- Gradual, smooth and step less control of power across the heater

Description

Libratherm offers Two phase heater power regulator model POW-2-PA-XX for power control of resistive or inductive heating loads. This regulator accepts the user selectable DC control signal of 0-5V, 0-10V and 4-20mA and hence can be easily interfaced with DDC, PID, or PLC. For manual control, external potentiometer can also be used.

The output voltage can be gradually varied proportional to the input signal. The built in back to back connected SCR can control single phase or two phase load of 10A to 40A. The phase angle firing control technique ensures smooth and gradual step less voltage control across the load.

Facility is also provided to adjust the soft rise or fall in voltage across the heater load using on card Ramp UP and Ramp Down settings. The maximum and minimum output voltage across heater load can also be adjusted. These regulators can be easily mounted inside the panel or on the base plate using 4 screws. For three phase load in star with neutral or 3 wire delta configurations, 3 independent regulators can be used with a common control signal.

These models find its application in Plastic (For Pet blow moulding machines infrared heater control), HVAC (For air heater control), Laboratory (For ovens/furnaces/hot plates) and many other applications using electrical heating control.

Technical Specifications

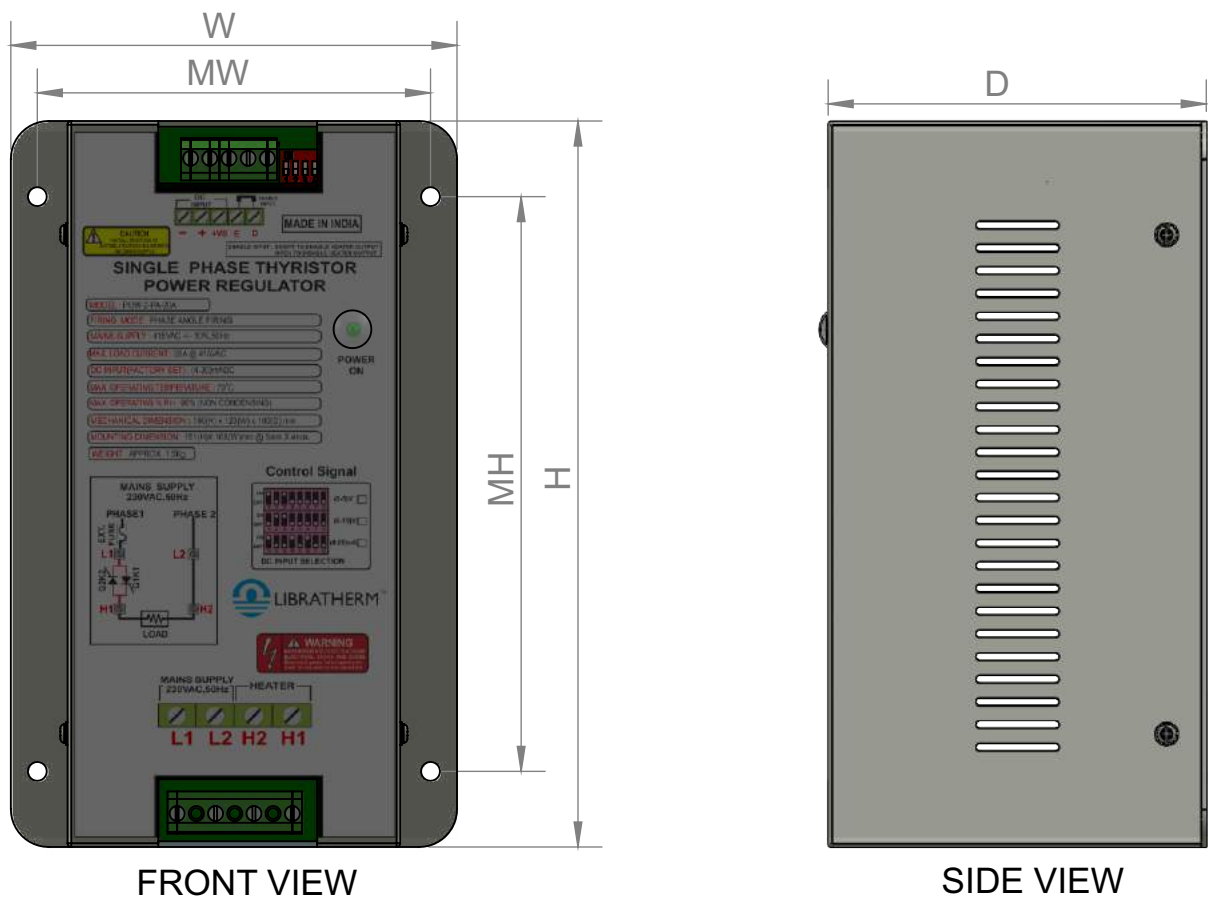
Item	Two Phase SCR based heater power regulator
Model	POW-2-PA-20A and POW-2-PA-40A
Control Signal Input (Linear)	0-5V, 0-10V, 4-20mA (DIP switch selectable) or using external 10K potentiometer.
Control Technique	Phase angle control (Self Synchronized).
Supply Voltage	415/440VAC +/- 10% @ 50/60Hz (Any one to be specified)
Output Voltage (Two phase Load)	0 to 380/415/440VAC with respect to 2nd phase and proportional to control signal.
Max. Load Current	20A, 40A @ 415/440VAC (As per the model specified in the above table)
Ramp Up/Down & Max/Min Power	Adjustable using on card single turn presets.
Enable/Disable input	External potential free contact for remote on/off operation.
Mounting	base plate mounting using 4 screws.
Connections	Separate terminals for Auxiliary Supply, Heaters and Control Signal.
Sizes (H x W x D)/ Mounting holes	As given in the above table.

ORDERING CODE

Model	Product Description	Part no.
POW-2-PA-20A	Two Phase SCR based Heater power regulator for max. 8 KW @ 415 / 440VAC load.	2401
POW-2-PA-40A	Two Phase SCR based Heater power regulator for max. 16 KW @ 415 / 440VAC load.	2402

DIMENSIONAL DRAWING

POW-2-PA



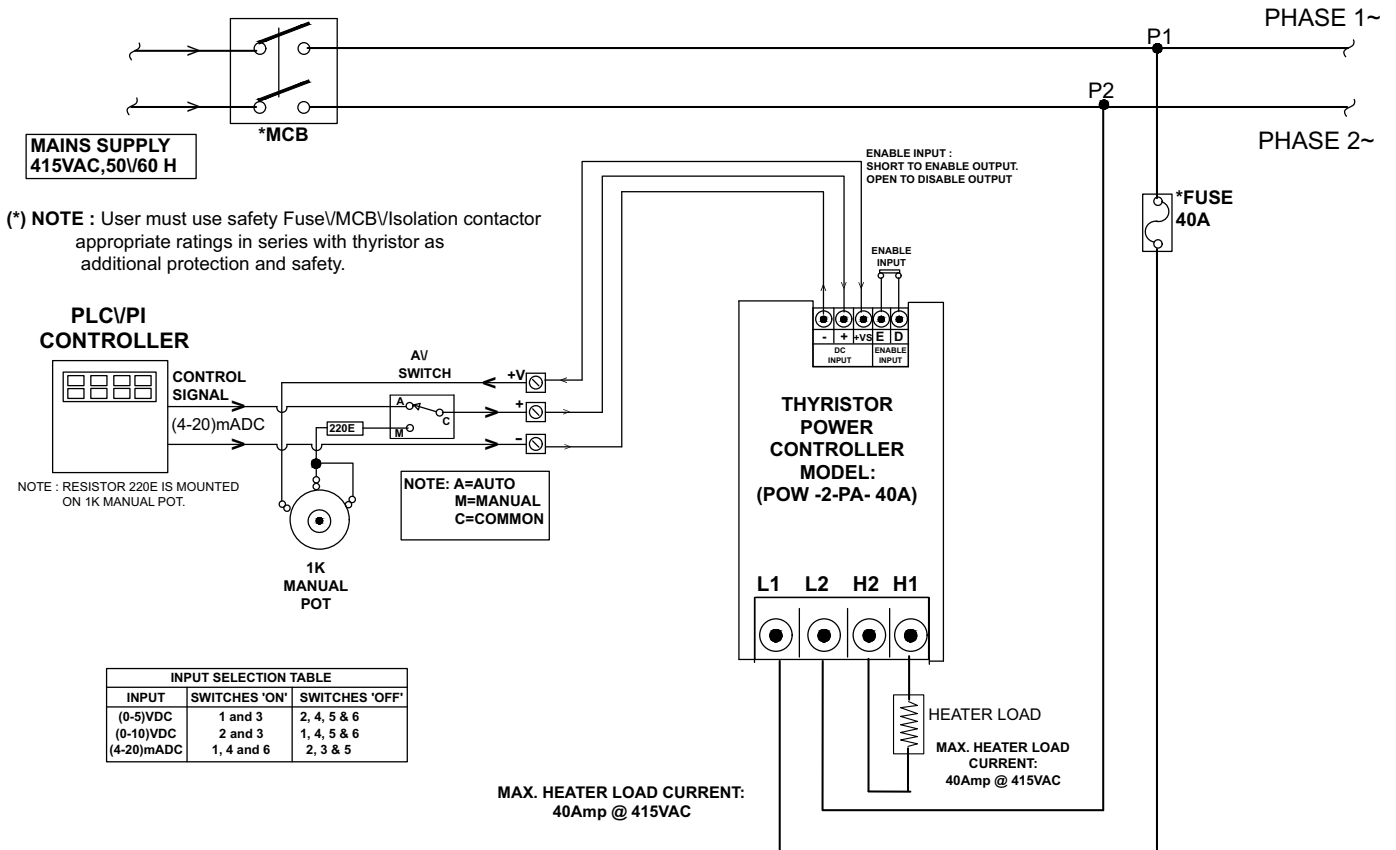
ALL DIMENSIONS IN mm

DIMENSION TABLE:-

SR NO.	MODEL NAME	HEIGHT (H)	WIDTH (W)	DEPTH (D)	MOUNTING HEIGHT (MH)	MOUNTING WIDTH (MW)
1	POW-2-PA-10A	190	120	100	150	105
2	POW-2-PA-20A	190	120	100	150	105
3	POW-2-PA-30A	190	130	110	150	110
4	POW-2-PA-40A	190	130	110	150	110

Note: Dimensions and specifications are subjected to change during product upgradation.

WIRING DIAGRAM



LOAD CONFIGURATION

